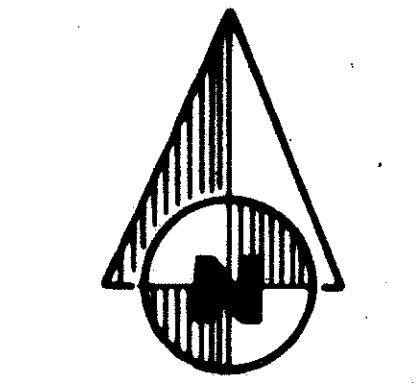


REPLAT BLOCKS 1 thru 6, PLAT NO. 2 CANNONGATE (P.U.D.)

Being A Replat Of Plat No. 2, Cannongate
P.U.D., P.B. 35, Pp. 109 thru 111, Public
Records Palm Beach Co., Florida, Lying
In Section 2, Township 44 South, Range
42 East, Palm Beach County, Florida
January, 1979
SHEET 2 OF 3

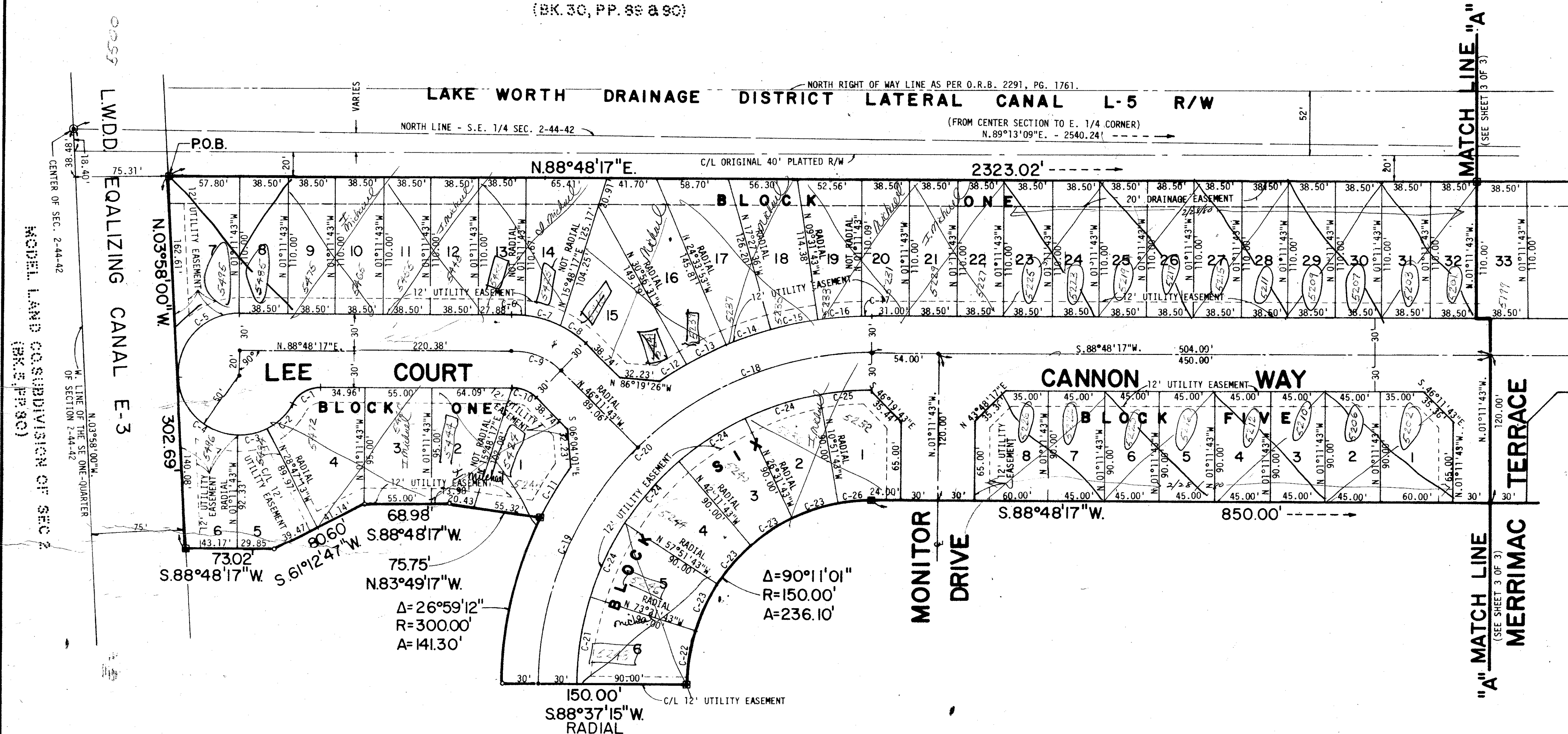
Check these P.B. + Pg. before addressing
and make note of REplat clearly
Visible on E/B 30mer79
APR - 3/30/79



174

STATE OF FLORIDA
COUNTY OF PALM BEACH
THIS PLAT WAS FILED FOR
RECORD AT _____ M.
THIS _____ DAY OF
AD, 1978 AND DULY RE-
CORDED IN PLAT BOOK
ON PAGES _____ AND _____
JOHN B. DUNKLE, CLERK
CIRCUIT COURT
BY: _____ DC

THE FOREST
(BK 30, PP. 88 & 90)



CURVE DATA					
C NO	CENT. ANG.	RADIUS	ARC	CHORD	TANGENT
C-1	62°10'55"	25.00'	27.13'	25.82'	15.01'
C-2	34°35'25"	50.00'	30.19'	29.73'	15.53'
C-3	27°35'30"	50.00'	24.08'	23.85'	12.28'
C-4	87°13'43"	50.00'	76.12'	68.98'	47.64'
C-5	52°46'17"	50.00'	80.96'	72.40'	52.48'
C-6	07°10'31"	85.00'	10.64'	10.64'	5.33'
C-7	20°27'44"	85.00'	30.36'	30.20'	15.34'
C-8	17°21'45"	85.00'	25.76'	25.66'	12.98'
C-9	45°00'00"	55.00'	43.20'	42.10'	22.78'
C-10	45°00'00"	25.00'	19.63'	19.13'	10.36'
C-11	08°27'14"	300.00'	44.26'	44.22'	22.17'
C-12	05°30'38"	300.00'	28.95'	28.84'	14.44'
C-13	06°44'47"	300.00'	35.32'	35.30'	17.68'
C-14	07°20'00"	300.00'	38.40'	38.37'	19.22'
C-15	07°20'00"	300.00'	38.40'	38.37'	19.22'
C-16	06°54'03"	300.00'	36.13'	36.11'	18.09'
C-17	01°25'57"	300.00'	7.50'	7.50'	3.75'
C-18	45°00'00"	270.00'	212.92'	206.65'	111.84'
C-19	45°11'01"	270.00'	212.92'	207.45'	112.35'
C-20	90°11'01"	270.00'	424.98'	382.45'	270.87'
C-21	17°51'01"	240.00'	74.77'	74.47'	37.69'
C-22	17°51'01"	150.00'	46.73'	46.54'	23.56'
C-23	15°40'00"	150.00'	41.02'	40.89'	20.64'
C-24	15°40'00"	240.00'	65.62'	65.42'	33.02'
C-25	09°24'01"	240.00'	39.38'	39.33'	19.73'
C-26	09°40'00"	150.00'	25.31'	25.28'	12.68'
C-27	07°15'00"	322.00'	40.74'	40.72'	20.40'
C-28	07°45'00"	322.00'	43.55'	43.52'	21.81'
C-29	05°37'48"	322.00'	31.64'	31.63'	15.83'
C-30	07°52'48"	322.00'	44.29'	44.25'	22.18'
C-31	53°00'00"	270.00'	270.11'	260.58'	145.59'
C-32	17°00'00"	292.00'	86.64'	86.32'	43.64'
C-33	10°00'00"	262.00'	45.73'	45.67'	22.92'
C-34	11°40'00"	262.00'	53.35'	53.26'	26.77'
C-35	11°40'00"	172.00'	35.02'	34.96'	17.57'
C-36	01°40'00"	172.00'	5.00'	5.00'	2.50'
C-37	01°40'00"	262.00'	7.62'	7.62'	3.81'
C-38	23°39'21"	100.00'	41.29'	40.99'	20.94'
C-39	13°20'39"	100.00'	23.29'	23.24'	11.70'
C-40	37°00'00"	130.00'	93.95'	82.50'	43.50'
C-41	03°49'23"	160.00'	10.68'	10.67'	5.34'
C-42	13°15'37"	160.00'	37.03'	36.95'	18.60'
C-43	13°15'00"	160.00'	37.00'	36.92'	18.58'
C-44	06°40'00"	160.00'	18.62'	18.61'	9.32'
C-45	05°58'56"	85.00'	8.87'	8.87'	4.44'
C-46	27°52'39"	85.00'	41.36'	40.95'	21.10'
C-47	56°44'04"	85.00'	84.17'	80.77'	45.90'
C-48	90°35'39"	55.00'	86.96'	78.18'	55.57'
C-49	90°35'39"	25.00'	39.53'	35.54'	25.26'
C-50	08°36'27"	260.00'	39.06'	39.02'	19.57'
C-51	02°47'06"	260.00'	12.64'	12.64'	6.32'
C-52	20°00'00"	230.00'	80.29'	79.88'	40.56'
C-53	10°00'00"	172.00'	30.02'	29.98'	15.05'
C-54	10°00'00"	200.00'	34.91'	34.86'	17.50'

MODEL LAND COMPANY'S SUBDIVISION OF SEC 2
(PLAT BOOK 5, PP. 60)

PUD
REPLAT Blocks 1-6 PLAT #2 CANNONGATE

- NOTES:
- INDICATES A 4" x 4" PERMANENT REFERENCE MONUMENT, FLA. CERT. #2424.
 - INDICATES A PERMANENT CONTROL POINT, FLA. CERT. #2424.
 - THERE SHALL BE NO BUILDINGS OR ANY KIND OF CONSTRUCTIONS OR TREES OR SHRUBS PLACED ON DRAINAGE EASEMENTS.
 - THERE SHALL BE NO BUILDINGS OR PERMANENT STRUCTURES PLACED ON UTILITY EASEMENTS.
 - BUILDING SET BACK LINES SHALL BE AS REQUIRED BY CURRENT PALM BEACH COUNTY ZONING REGULATIONS.
 - THIS INSTRUMENT WAS PREPARED BY ROBERT J. WHIDDEN IN THE OFFICES OF BENCH MARK SURVEYING AND MAPPING, INC., 2300 PALM BEACH LAKES BLVD., WEST PALM BEACH, FLA. 33409. TEL. 689-2111.

0220-306

2/44/72

BENCH MARK
Land surveying and mapping, inc.

CANNONGATE PLAT NO. 2
36/174

1-24-78 1"=50' 2 3